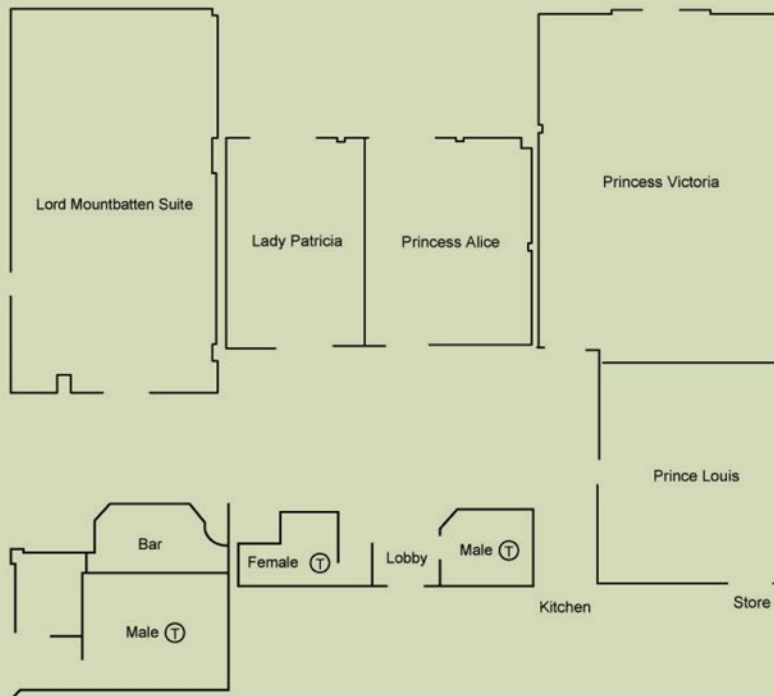


The Royal Suites (Ground Floor)



ROOM SIZE & CAPACITIES (NO. OF DELEGATES)

Room Name	Theatre F/P	Theatre B/P	Cabaret F/P	Cabaret B/P	C'Room F/P	C'Room B/P	Board-room	U-Shape	Reception	Lunch/ Dinner	Dinner Dance	Length ft / m	Width ft / m	Area ft ² / m ²	Height ft / m
Lord Mountbatten	100	60	50	40	40	30	50	30	140	80	60	46'9" / 14.3	25'3" / 7.7	118' / 110.1	11'8" / 3.6
Princess Victoria	110	80	60	40	40	30	50	40	140	100	N/A	39'4" / 12.0	27'2" / 8.3	1071' / 99.6	8'2" / 2.5
Princess Louis	25	15	N/A	N/A	12	N/A	12	12	30	20	N/A	26'3" / 8.0	18'0" / 5.5	473' / 44	8'2" / 2.5
Victoria/Louis Combined	140	110	80	60	60	50	50	40	200	120	80	65'6" / 20.0	27'2" / 8.3	1784' / 166	8'2" / 2.5
Lady Patricia	25	N/A	N/A	N/A	N/A	N/A	12	N/A	30	24	N/A	22'6" / 6.9	16'1" / 4.9	363' / 33.81	8'2" / 2.5
Princess Alice	25	N/A	N/A	N/A	N/A	N/A	12	N/A	30	24	N/A	22'6" / 6.9	18'0" / 5.5	405' / 37.95	8'2" / 2.5
Patricia/Alice Combined	50	N/A	40	30	16	N/A	20	16	60	50	N/A	22'6" / 6.9	34'1" / 10.4	770' / 71.76	8'2" / 2.5